

EXCAVATOR



SY75C

STANDARD FEATURES

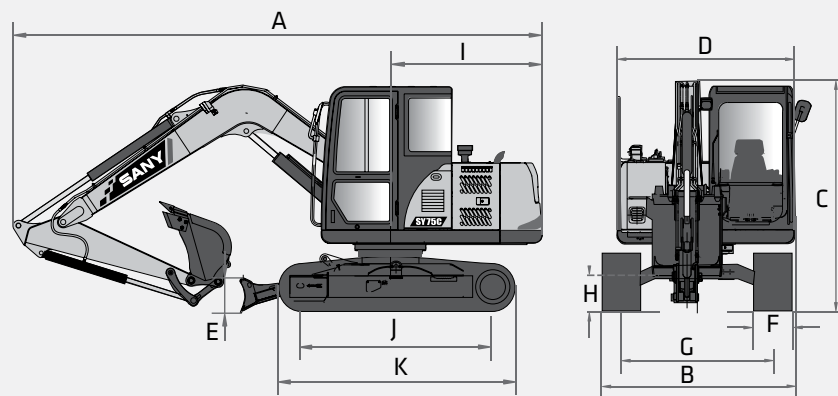
- ➔ Fixed boom functionality and Conventional tail swing
- ➔ 1-way and 2-way primary auxiliary with 2-way secondary auxiliary circuits
- ➔ Quick coupler plumbing to end of stick
- ➔ Advanced touchscreen display
- ➔ Powerful Yanmar engine

54.0 hp
Net Power

14' 7"
Dig Depth

16,050 lbs
Operating Weight

11,915 lbf
Bucket Breakout



TECHNICAL SPECIFICATIONS

TECHNICAL SPECIFICATIONS		
Operating Weight	16,050 lbs	7 280 kg
Ground Pressure	4.8 psi	33 kPa
Engine	Yanmar 4TNV98C	
Displacement	201.4 in ³	3.3 L
Gross Power	56.9 HP	42.4 kW
Net Power	54 HP	40.5 kW
Hydraulics	Load Sensing with Pilot Control	
Main Hydraulic Pump	Axial Piston - Variable Displacement	
Operating Flow (maximum)	39.4 gal/min	149 L/min
Operating Pressure (maximum)	3,814 psi	26.3 MPa
Auxiliary Flow (maximum)*	31.7 gal/min	120 L/min
Auxiliary Pressure (maximum)	3,626 psi	25 MPa
Travel Motor	Axial Piston with Park Brake	
Travel Pressure (maximum)	3,814 psi	26.3 MPa
Travel Speeds (maximum)	1.4 / 2.6 mph	2.3 / 4.2 km/hr
Travel Effort (maximum)	12,769 lbf	56.8 kN
Grade Capability (maximum)	35°	
Swing Motor	Axial Piston with Swing Brake	
Swing Speed (maximum)	11.5 RPM	
Undercarriage (standard)	Belted Rubber Track	
Track Width (standard)	18"	450 mm
Track Rollers (per side)	5	
Carrier Rollers (per side)	1	

DIMENSIONS

DIMENSIONS		
Boom Length	12' 3"	3 720 mm
Stick (Arm) Length	6' 9"	2 050 mm
A Transport Length	20' 1"	6 125 mm
B Transport Width	7' 4"	2 220 mm
C Transport Height	8' 11"	2 720 mm
D Upper Structure Width	6' 8"	2 040 mm
E Blade Height	16"	405 mm
F Track Width	18"	450 mm
G Track Gauge	5' 10"	1 770 mm
H Ground Clearance	1' 3"	380 mm
I Tail Swing Radius	5' 11"	1 800 mm
J Track Length on Ground	7' 2"	2 195 mm
K Track Length	9' 3"	2 820 mm
SERVICE REFILL CAPACITIES		
Fuel Tank Capacity	26.4 gal	99.9 L
Hydraulic Tank Capacity	31.7 gal	119.9 L
Engine Oil Capacity	2.7 gal	10.2 L
Cooling System Capacity	3.1 gal	11.7 L

*Based on theoretical calculation at max flow with no load. Subject to alterations. In the interest of continual equipment development

SANY America Inc. reserves the right to change these specifications at any time without prior notification. ©2023 SANY America Inc. HEXPS23SY75CU001



STANDARD AND OPTIONAL EQUIPMENT

s = standard / o = optional

SY75C	ENGINE
s	Yanmar 4TNV98C
s	Tier 4F / EU Stage V Ready
s	Auto-idle
s	Push button start
s	Dual-element dry air filter
s	Engine air precleaner
s	Coolant Expansion tank
s	Electronic engine control
s	Fan guard
s	Engine coolant to -37 deg. C (-34 deg. F)
s	Full-flow oil filter
s	Automatic and manual engine regeneration
s	High flow cooling fan
s	500-hour engine-oil-change interval
s	No scheduled maintenance DPF for 6000 hours
s	Fuel filter and water separator
HYDRAULIC SYSTEM	
s	Spring-applied, hydraulically released automatic swing brake
s	Load sensing hydraulic system
s	Control pattern change valve
s	Continuous flow function
s	Primary auxiliary hydraulics circuit with 1 and 2-way combination piping
s	Auxiliary hydraulic-flow adjustments through monitor
s	Adjustable auxiliary pressure relief
s	Quick coupler ready
UNDERCARRIAGE	
s	Planetary drive with axial piston motors
s	Propel motor shields
s	Spring-applied, hydraulically released automatic propel brake
s	Track guides, front idler and 2 per side
s	2-speed travel selection through display and on dozer lever
s	5 lower track rollers each side
s	1 upper carrier roller each side
s	Dozer blade with cylinder guarding
s	Tie downs on track frame and dozer blade
s	450mm (18") wide rubber tracks (standard)
s	450mm (18") wide steel tracks (optional)
s	Undercarriage frame opening guard
UPPERSTRUCTURE	
s	Right-hand, left-hand, and counterweight mirrors
s	Lockable cab, hood, and service doors
s	Debris screen in side panel
s	Remote-mounted engine oil and fuel filters
s	Daily fluid level inspection visible from ground
s	Rear reflectors
s	Attachments
s	Convenient grease points
s	Dirt seals on all bucket pins

PRODUCT SPECIFICATIONS EXCAVATOR || SY75C



STANDARD AND OPTIONAL EQUIPMENT

s = standard / o = optional

SY75C	ATTACHMENTS
s	Thumb bracket
s	Oil-impregnated bushings
s	Reinforced thrust plates
s	Quick coupler plumbing to end of the stick
OPERATOR'S STATION	
s	Hydraulic pilot controls for boom, stick, swing, and travel operations
s	Proportional auxiliary switches on joystick
s	Travel levers with foot pedals
s	Bluetooth handsfree radio integrated into display
s	Rear view camera
s	Cell phone tray
s	Weight adjustable suspension cloth seat with fore/aft adjustment and adjustable armrests
s	2" seat mounted lap belt
s	Emergency stop switch
s	Sliding front window
s	Removable lower front window
s	Window breaker
s	ECO mode switch
s	8 tool selection modes
s	Fully adjustable auxiliary flow circuit and pressure from display
s	Operator passcode
s	Multifunction color LCD touchscreen display with diagnostic capability / Multiple-language
s	System monitoring features: Auto-idle indicator, 2-speed indicator, work-mode indicator, preheat icon, time and date, battery charge icon, throttle position, engine oil pressure alarm, DPF regeneration inhibit indicator, fuel level gauge, maintenance needed icon, failure code, standard/eco work mode icon, engine coolant temperature, coolant temp alarm, severe failure alarm, work tool mode icon, operating hours
s	High performance heating, ventilation, and air conditioning system
s	Operation and maintenance manual storage
s	Heavy duty removeable rubber floor mat
s	Front windshield wiper with high and low speed
s	Horn, electric
s	Hour meter, electric
s	Hydraulic shutoff lever, all controls
s	Interior light
s	Cup holder
s	Travel alarm with cancel switch
s	Transparent overhead hatch with retractable sunshade
ELECTRICAL	
s	12V electrical system
s	Maintenance free battery
s	Ground level battery disconnect
s	Terminal battery covers
s	80-amp alternator
s	12V power outlet
LIGHTS	
s	Work lights: 2 mounted on top of cab, 1 on boom, 1 on platform, magnetic beacon



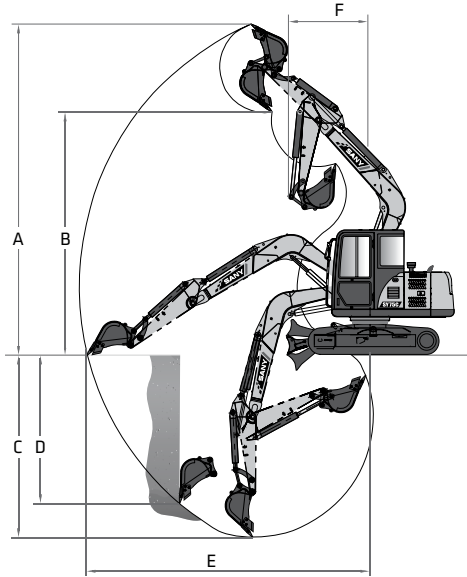
*Warranty applies to 2023 Excavator and Wheel Loader models only



In the interest of continual equipment development, SANY America Inc. reserves the right to change these specifications at any time without prior notification. ©2023 SANY America Inc. HEXPS23SY75C001

PRODUCT SPECIFICATIONS EXCAVATOR ||| SY75C

WORKING RANGE

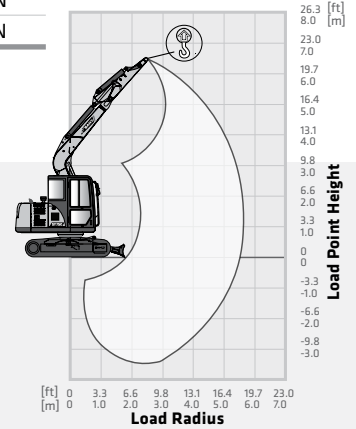
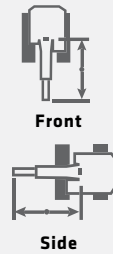


WORKING RANGE		
Boom Length	12' 3"	3 720 mm
Stick Length	6' 9"	2 050 mm
A Maximum Digging Height	24'	7 390 mm
B Maximum Dumping Height	18'	5 490 mm
C Maximum Digging Depth	14' 7"	4 450 mm
D Maximum Vertical Wall Digging Depth	12' 3"	3 740 mm
E Maximum Reach at Ground Level	21' 4"	6 505 mm
F Minimum Swing Radius	5' 11"	1 800 mm
DIGGING PERFORMANCE		
Boom Length	12' 3"	3 720 mm
Stick Length	6' 9"	2 050 mm
Bucket Breakout Force (ISO)	11,915 lbf	53 kN
Stick Digging Force (ISO)	7,868 lbf	35 kN

LIFTING PERFORMANCE

Standard 12' 3" (3 720 mm) Boom
 Standard 6' 9" (2 050 mm) Stick
 Standard 18" (450 mm) Track Shoes
 No Bucket

Ratings are based on ISO 10567:2007. Lift capacity does not exceed 75% of tipping load with the machine on firm, level ground or 87% of hydraulic lifting capacity.



BLADE DOWN

BLADE UP

LOAD RADIUS LOAD POINT HEIGHT	3.3 ft 1.0 m		6.6 ft 2.0 m		9.8 ft 3.0 m		13.1 ft 4.0 m		16.4 ft 5.0 m		MAX REACH	
	Front	Side	Front	Side	Front	Side	Front	Side	Front	Side	Front	Side
19.7 ft 6.0 m					3,050 lb* 1 385 kg*	3,050 lb* 1 385 kg*					2,670 lb* 1 210 kg*	2,670 lb* 1 210 kg*
16.4 ft 5.0 m							2,975 lb* 1 350 kg*	2,975 lb* 1 350 kg*			2,250 lb* 1 020 kg*	2,250 lb* 1 020 kg*
13.1 ft 4.0 m					2,900 lb* 1 315 kg*	2,900 lb* 1 315 kg*	2,985 lb* 1 355 kg*	2,985 lb* 1 355 kg*	2,335 lb* 1 060 kg*	2,335 lb* 1 060 kg*	2,095 lb* 950 kg*	2,095 lb* 950 kg*
9.8 ft 3.0 m			4,650 lb* 2 100 kg*	4,650 lb* 2 110 kg*	3,770 lb* 1 710 kg*	3,770 lb* 1 710 kg*	3,385 lb* 1 535 kg*	3,385 lb* 1 535 kg*	3,220 lb* 1 460 kg*	2,700 lb* 1 225 kg*	2,050 lb* 930 kg*	2,050 lb* 930 kg*
6.6 ft 2.0 m					5,015 lb* 2 275 kg*	5,015 lb* 2 275 kg*	3,925 lb* 1 780 kg*	3,660 lb* 1 660 kg*	3,495 lb* 1 585 kg*	2,625 lb* 1 190 kg*	2,095 lb* 950 kg*	2,095 lb* 950 kg*
3.3 ft 1.0 m					6,150 lb* 2 790 kg*	5,290 lb* 2 400 kg*	4,550 lb* 2 065 kg*	3,305 lb* 1 590 kg*	3,780 lb* 1 715 kg*	2,545 lb* 1 155 kg*	2,115 lb* 960 kg*	2,095 lb* 950 kg*
0 ft 0 m			4,820 lb* 2 185 kg*	4,820 lb* 2 185 kg*	6,800 lb* 3 085 kg*	5,100 lb* 2 315 kg*	4,970 lb* 2 255 kg*	3,375 lb* 1 530 kg*	4,000 lb* 1 815 kg*	2,480 lb* 1 125 kg*	2,435 lb* 1 105 kg*	2,160 lb* 980 kg*
-3.3 ft -1.0 m	4,640 lb* 2 105 kg*	4,640 lb* 2 105 kg*	7,500 lb* 3 405 kg*	7,500 lb* 3 405 kg*	6,920 lb* 3 138 kg*	5,015 lb* 2 275 kg*	5,105 lb* 2 315 kg*	3,320 lb* 1 505 kg*	3,980 lb* 1 805 kg*	2,460 lb* 1 115 kg*	2,870 lb* 1 300 kg*	2,360 lb* 1 070 kg*
-6.6 ft -2.0 m	7,530 lb* 3 415 kg*	7,530 lb* 3 415 kg*	9,390 lb* 4 260 kg*	9,390 lb* 4 260 kg*	6,515 lb* 2 955 kg*	5,025 lb* 2 280 kg*	4,805 lb* 2 180 kg*	3,330 lb* 1 510 kg*			3,705 lb* 1 680 kg*	2,810 lb* 1 275 kg*
-9.8 ft -3.0 m			7,580 lb* 3 440 kg*	7,580 lb* 3 440 kg*	5,280 lb* 2 395 kg*	5,160 lb* 2 340 kg*					4,155 lb* 1 885 kg*	4,010 lb* 1 820 kg*

* Indicates load limited by hydraulic lifting capacity.

