

TELEHANDLER

STH1056A

STANDARD FEATURES

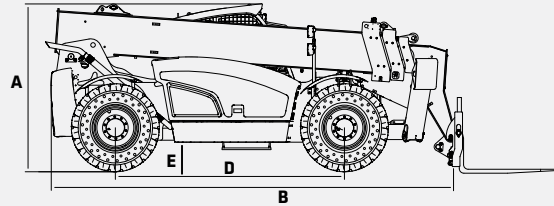
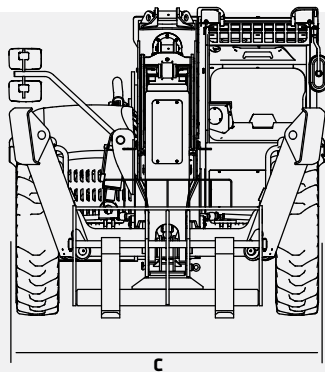
- Configured as 74hp (no DEF) or 121 hp
- Wide angle rear view camera
- Reverse object detection
- Axle mounted stabilizers
- Powerful Deutz engine

121 hp
Gross Power

56' 2"
Max Lift Height

10,000 lbs
Max Lift Capacity

33,290 lbs
Operating Weight



DIMENSIONS

DIMENSIONS

| | | |
|----------------------------------|------------|-----------|
| Maximum Lift Height | 56' 2" | 17.13 m |
| Maximum Forward Reach | 42' 11" | 13.08 m |
| A Height, Stowed | 8' 5" | 2.56 m |
| B Length, Stowed (without Forks) | 20' 7" | 6.28 m |
| c Width | 8' 6" | 2.59 m |
| d Wheelbase | 11' 5" | 3.49 m |
| E Ground Clearance (Center) | 1' 6" | 0.46 m |
| Ground Clearance (Axle) | 1' 6" | 0.45 m |
| Weight | 33,290 lbs | 15,100 kg |

TECHNICAL SPECIFICATIONS

CAPACITIES

| | | |
|---------------------------------------|------------|--------|
| Power | 121 hp | 90 kW |
| Torque | 360 lbf-ft | 488 Nm |
| Electrical System | 24 volt | |
| Hydraulic Tank Capacity | 33 gal | 124 L |
| Hydraulic System Capacity (with Tank) | 42 gal | 159 L |
| Fuel Tank Capacity | 36 gal | 135 L |

COMPONENTS

| | |
|--------------------|---------------------------------|
| Engine | Deutz TCD3.6 |
| Transmission | Dana VDT12000 |
| Axles F/R | Dana 223 / 213 |
| Hydraulic Pump | Kawasaki Load Sense Piston Pump |
| Hydraulic Manifold | Parker |

*Based on theoretical calculation at max flow with no load. Subject to alterations. In the interest of continual equipment development, SANY America Inc. reserves the right to change these specifications at any time without prior notification.
©2023 SANY America Inc. HEXPS235TH1056A001



STANDARD AND OPTIONAL EQUIPMENT

s = standard / o = optional

| STH1056A | ENGINE |
|------------|---|
| s | Exhaust aftertreatment (DPF+SCR (DEF required)) |
| POWERTRAIN | |
| s | Powershift transmission |
| s | Planetary limited slip axles |
| s | Full-time 4 wheel drive |
| s | Gear selector lever (Steering-column) |
| s | Manual shift |
| s | Service brake, 4-wheel, wet-disc, spring applied, hydraulic release |
| s | Parking brake, same as service brake |
| s | Cushioned solid tires |
| HYDRAULIC | |
| s | Full variable load-sensing system |
| s | Single electric over hydraulic joystick controls |
| s | Axial piston pump |
| s | Hydraulic quick coupler lines for auxiliary hydraulics |
| s | Self-leveling forks |
| s | Three driver-selectable steering modes (2W, 4W, 4W-Crab) |
| CABIN | |
| s | ISO certified ROPS/FOPS Canopy |
| s | Emergency hammer (closed cabin only) |
| s | Rubber isolated cab mounts |

In the interest of continual equipment development, SANY America Inc. reserves the right to change these specifications at any time without prior notification.
 ©2023 SANY America Inc. HEXPS235TH1056A001



*Warranty applies to 2023 Crane, Telehandler, Grader and Roller models only.



STANDARD AND OPTIONAL EQUIPMENT

s = standard / o = optional

| STH1056A | CABIN (CONTINUED) |
|--------------|---|
| o | Fully enclosed cab with automatic heat and air conditioning |
| s | Digital instrument display |
| s | Mechanical suspension seat |
| s | Seat belt, 3 inch retractable |
| s | Dual armrests |
| s | Rear-view camera |
| s | 2-speed fan |
| s | Dedicated display for rear-view camera |
| ELECTRICAL | |
| s | 24v electrical system |
| s | 2-12 volt batteries |
| PRODUCTIVITY | |
| s | Back up camera |
| s | Reverse sensing system |
| s | Full 4-wheel fender package |
| s | LED work lights on cab and boom |
| s | Flashing beacon |
| s | Lifting hook |
| s | Frame leveling 10 degrees side to side |
| s | Rear-Axle stabilization system |
| s | Axle-mounted front stabilizers |

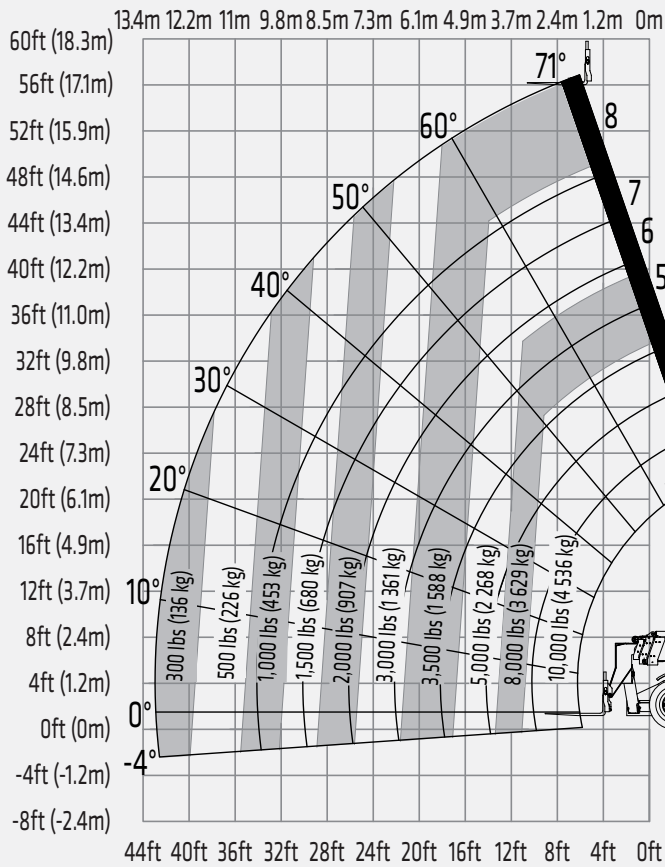
In the interest of continual equipment development, SANY America Inc. reserves the right to change these specifications at any time without prior notification.
 ©2023 SANY America Inc. HEXPS235TH1056A001



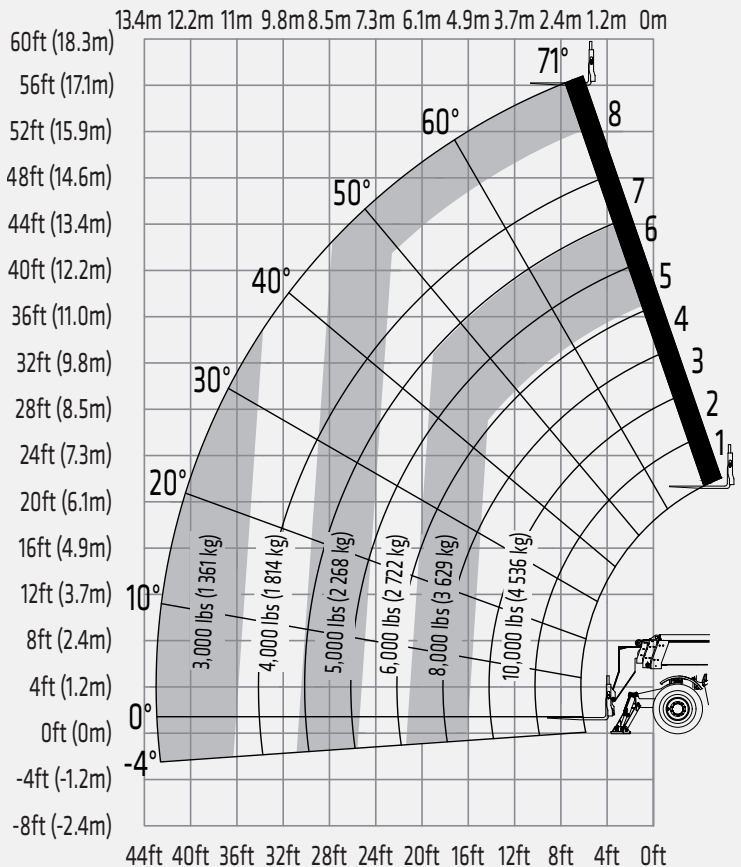
PRODUCT SPECIFICATIONS TELEHANDLER ||| STH1056A

PERFORMANCE

| PERFORMANCE | | |
|---------------------------------|-------------------------|----------|
| Maximum Lift Capacity | 10,000 lbs | 4 536 kg |
| Lift Capacity at Maximum Height | 5,000 lbs | 2 268 kg |
| Lift Capacity at Maximum Reach | 3,000 lbs | 1 361 kg |
| Boom (Raise/Lower) | 14 seconds / 11 seconds | |
| Boom (Extend/Retract) | 16 seconds / 15 seconds | |
| Frame Leveling | +/- 10 degrees | |
| Maximum Drive Speed | 17 mph | 28 kph |
| Outside Turning Radius (4WS) | 14' 1" | 4.30 m |
| Auxiliary Hydraulic Flow | 17 gpm | 63 L/min |
| Auxiliary Hydraulic Pressure | 2,466 psi | 17 MPa |
| Standard Tire Size | 14.00-24 | |



Outriggers Up



Outriggers Down

* Indicates load limited by hydraulic lifting capacity.

In the interest of continual equipment development, SANY America Inc. reserves the right to change these specifications at any time without prior notification.
©2023 SANY America Inc. HEXPS235TH1056A001

SANY America Inc. 318 SANY Way
Peachtree City, Georgia 30269
470.552.SANY sanyamerica.com

