

LOG LOADER 310L



ELTEC
BY LOGGERS FOR LOGGERS



ENTIRELY MANUFACTURED IN CANADA

ELTEC Log Loaders have been designed to simplify the daily foresters' work. Combining advanced technical features, **ELTEC** Log Loaders offer a comfortable working environment, which allows moving to another level of performance in the forestry.

EXTREMELY ROBUST DESIGN

Adapted design and premium materials help **ELTEC** Log Loaders lift heavy loads and withstand different impacts. Better stability is ensured by the chassis-carrier with a very long wheelbase.

PERFORMING COOLING SYSTEM

- High capacity coolers suitable for extreme conditions
- Variable speed and reversible fan
- Specially designed grate which prevents debris from entering the cooler
- Rear coolers which ensure cleaner air aspiration



ACCESSIBILITY FOR THE SERVICE

The spacious engine compartment with steel catwalks is designed to simplify service and maintenance. Once opened, the hood is transformed into a platform for component service. The filtration system is accessible for cartridge replacement. Excellent access to batteries is available as well.



CONTROL DEVICES

- Joystick and electronic pedals for operation functions
- Keyboard (2) with power and service functions
- Color screen with full machine interface
- Rear camera with color screen
- Electronic controls with all programmable functions



SPACIOUS CAB

All **ELTEC** Log Loaders have a soundproof and insulated cab equipped with a pneumatic suspension heated seat with multiple adjustments. The front full-height 32mm (1.25") polycarbonate window provides a peerless overview. To ensure superior comfort, **ELTEC** Log Loaders feature a high-capacity, integrated HVAC system with multiple adjustable airflows. The radio with a CD player and USB port are also available.



With all these specifications the **ELTEC** Log Loaders will exceed the most demanding expectations of professional foresters.

SPECIFICATIONS

ELTEC

POWER

Cummins QSL9 T4 diesel engine	239 kw (320hp) @ 2 100 rpm
Cummins QSL9 T3 diesel engine*	239 kw (320hp) @ 2 100 rpm

CAPACITY

Fuel Tank	1 491 L / 394 gal US
Hydraulic Tank	284 L / 75 gal US

TRACTION DRIVE

Torque	135 582 Nm / 100 000 lb/ft
--------	----------------------------

MOVEMENT SPEED

Low	2,2 km/hr / 1,4 mph
Medium	3,0 km/hr / 1,86 mph
High	4,2 km/hr / 2,5 mph

ELECTRICAL SYSTEM

Voltage	24 V
Alternator	110 amp
Batteries	2 x 1 150 amp
Motion alarm	
Lightning	LED

COOLING SYSTEM

Type	Side by side heavy-duty
Fan	Adjustable reverse cycle, 1 143 mm / 45"

CHASSIS CARRIER

Chain	D7- 216 mm / 8,5"
Track Single Browser	710 mm / 28"
Track Double Browser	710 mm / 28"
Undercarriage	D7 Tractor type (9)

SWING DRIVE

Large capacity swing bearing	1 550 mm / Ø61"
Continuous rotation	8 rpm
Torque	115 243 Nm / 100 000 lb/ft

MEASURES

A	Overall Length	14 503 mm / 47'7"
B	Overall Track Length	5 207 mm / 17'1"
C	Bare Pin	11 074 mm / 36'4"
D	Overall Height	5 232 mm / 17'2"
E	Tail Swing (From Swing Center)	3 429 mm / 11'3"
F	Upper Structure Overall Length	5 639 mm / 18'6"
G	Traction Overall Width	3 472 mm / 11'4"
H	Track Width	710 mm / 2'4"
I	Tail Swing (From Swing Center)	1 422 mm / 4'8"
J	Upper Structure Overall Width	2 921 mm / 9'7"
K	Track Height	1 220 mm / 4'0"
L	Minimum Ground Clearance	864 mm / 2'10"
M	Overall Height (Short Cab)	4 826 mm / 15'10"
	Weight**	41 549 kg / 91 600 lbs

* export only

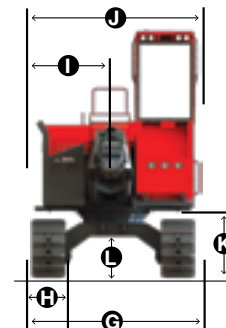
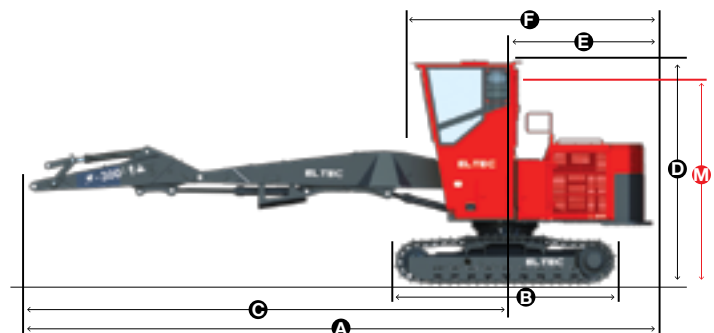
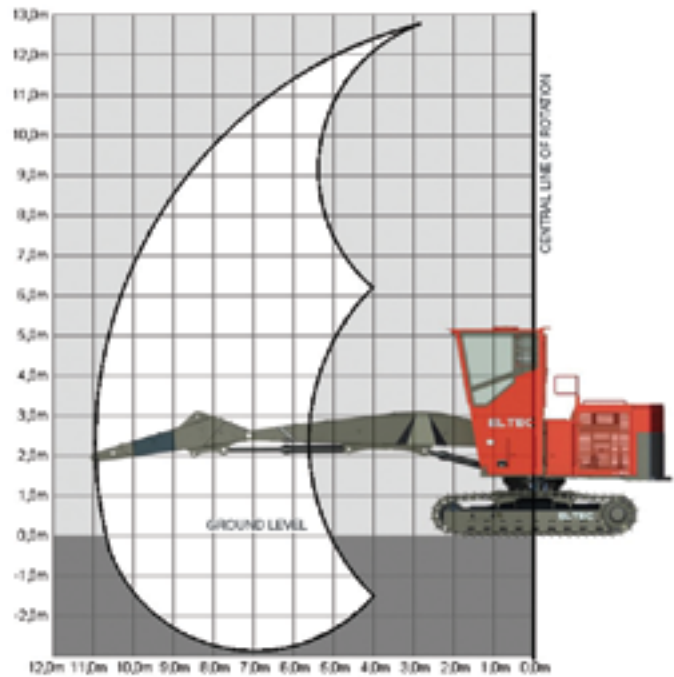
**Basic without accessories

BOOM SYSTEM

Boom cylinders		145 mm / 5,7"
Stick cylinders		160 mm / 6,3"
PC34	Minimum Reach	5 182 mm / 17'0"
	Maximum Reach	10 033 mm / 32'11"
PC37	Minimum Reach	5 563 mm / 18'3"
	Maximum Reach	10 947 mm / 35'11"

LIFTING CAPACITY AT BARE PIN

PC34	8 573 kg / 18 900 lbs @ 30'
PC37	6 577 kg / 14 500 lbs @ 35'





ELTEC

BY LOGGERS FOR LOGGERS



Technologies Élément PSW Inc

1117, rue des Manufacturiers

Val-d'Or (Québec) Canada J9P 6Y7

T. 819 825-1117 F. 819 825-7777

technologieselement.com